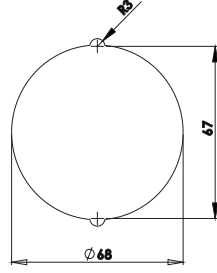
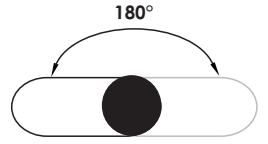
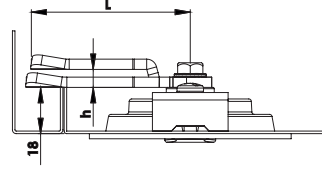
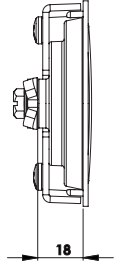
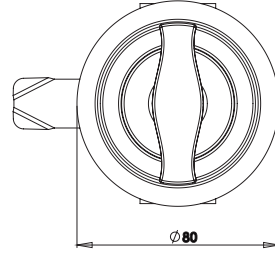


**KD09**

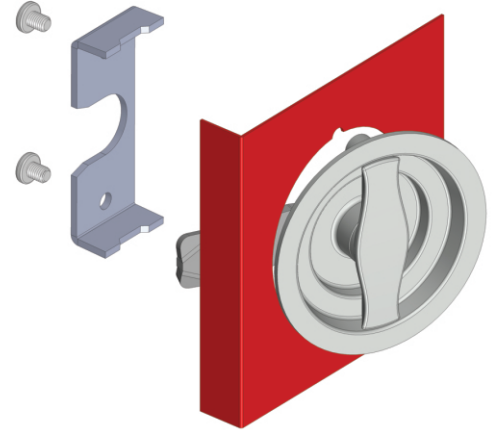
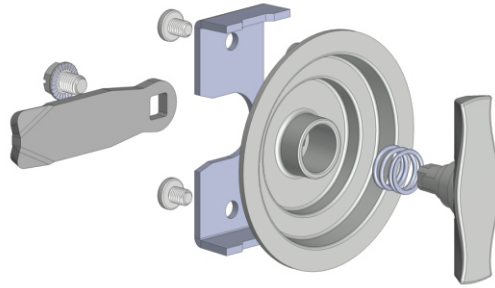
**YANGIN DOLABI KİLİDİ ( Zamak )**  
**DISH HANDLE FOR FIRE CABINET (Zamak)**



Geçiş Ölçüsü  
Cut Out



Dönme Açısı  
Rotation Angle



**Kullanım Alanları**

- \* Yangın Dolapları
- \* Makine Kapakları

**Malzeme**

- \* 1: Gövde: Zamak  
DIN-EN 1774-ZnAl4Cu1
- \* 2: Kaplama: Krom
- \* 5: Kaplama: Boyalı
- \* Dil (CC): Çelik

**Applications**

- \* Fire Cabinets
- \* Machinery Covers

**Material :**

- \* 1: Body: Zamak  
DIN-EN 1774-ZnAl4Cu1
- \* 2: Finish: Chrome
- \* 5: Finish: Black Coated
- \* Cam (CC): Steel

Grup Kodu	Malzeme	Yüzey Kaplama	Dil Kodu
Group Code	Material	Finish	Cam Code
KD09	.1	.2	.CC
		.5	
	1: Zamak	2: Krom / Chrome	
		5: S. Boyalı / Black Coated	

Dil Kodu / Cam Code (CC)	h	L
1080	0	65
1081	3	64
1084	7	63
1087	12	60