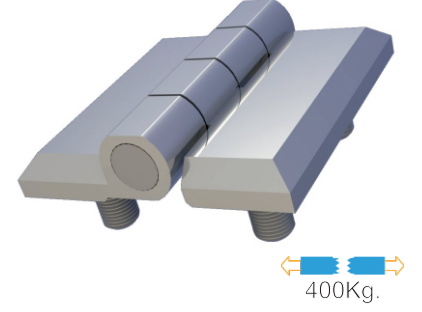


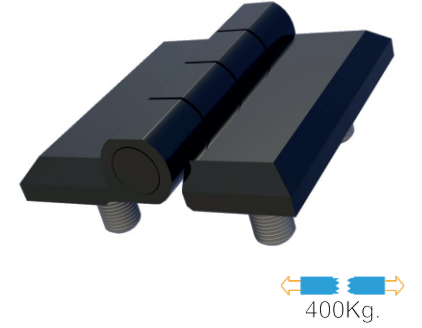
### MY6060.1.2.1

YAPRAK MENTEŞE (60\*60mm-Krom Kaplı.-Civatalı)  
LEAF HINGE (60\*60mm-Chrome Plated-With Bolt)



### MY6060.1.5.1

YAPRAK MENTEŞE (60\*60mm-Boyalı-Civatalı)  
LEAF HINGE (60\*60mm-Black Coated-With Bolt)



#### **Kullanım Alanları**

- \* Elektrik Panoları
- \* Makine Kapakları

#### **Malzeme**

- \* Gövde: Zamak  
DIN-EN 1774-ZnAl4Cu1
- \* Pim : Çelik St 37
- \* Civata: Çelik St 37
- \* 2: Kaplama: Krom
- \* 5: Kaplama: Boyalı
- \* Menteşe Dönme Açısı: 180°

#### **Applications**

- \* Electric Panels
- \* Machinery Covers

#### **Material**

- \* Body: Zamak  
DIN-EN 1774-ZnAl4Cu1
- \* Pin : Steel St 37
- \* Screw: Steel St 37
- \* 2: Finish: Chrome
- \* 5: Finish: Black Coated
- \* Hinge Rotation Angle: 180°