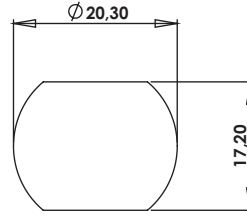
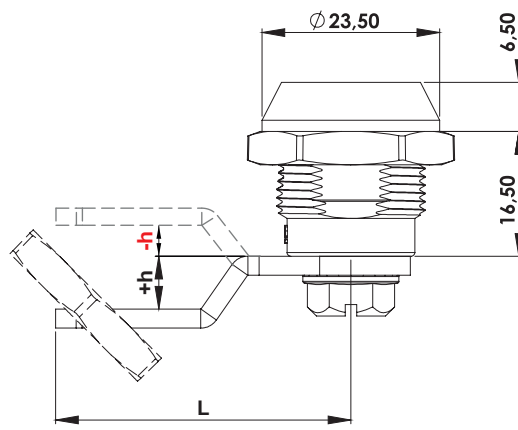
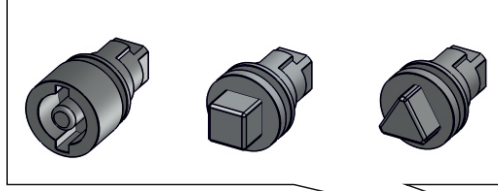
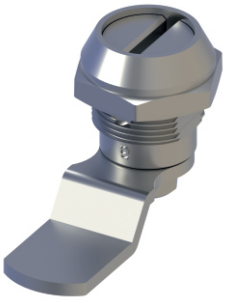
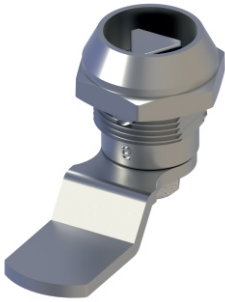
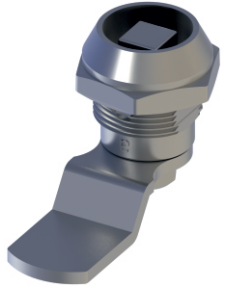
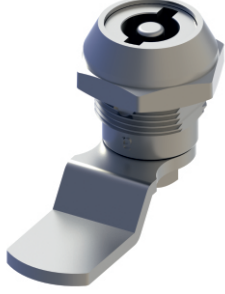


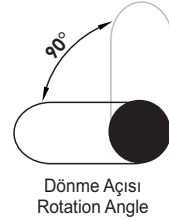
KY01

YAYLI MANDALLI KİLİT
QUARTER TURN WITH SPRING

Göbekler için Sayfa: 2 - Tablo: C
For drivers please check Page: 2 - Table: C



Geçiş Ölçüsü
Cut Out



Dönme Açısı
Rotation Angle

Kullanım Alanları

- * Elektrik Panoları
- * Makine Kapakları

Malzeme

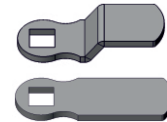
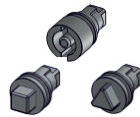
- * 1: Gövde: Zamak
DIN-EN 1774-ZnAl4Cu1
- * 2: Kaplama: Krom
- * Dil (CC): Çelik

Applications

- * Electric Panels
- * Machinery Covers

Material :

- * 1: Body: Zamak
DIN-EN 1774-ZnAl4Cu1
- * 2: Finish: Chrome
- * Cam (CC): Steel



Grup Kodu	Göbek Kodu	Malzeme	Yüzey Kaplama	Dil Kodu	Koruma Derecesi
Group Code	Driver Code	Material	Finish	Cam Code	Ingress Protection Rating
KY01	.DD	.1	.2	.CC	.0
	Göbekler için Sayfa: 2 - Tablo: B For drivers please check Page: 2 - Table: B			Diller için Sayfa: 1 - Tablo: 6 For cams please check Page: 1 - Table: 6	.1
		1: Zamak	2: Krom / Chrome		0: Yok / No 1: IP65